

- > Port size: DN 20 ... 65, Tank Valve execution
- > High flow rate
- > Clear, compact design
- > One-piece diaphragm



Technical features

Medium:

Air

Switching function:

Normally closed

Operation:

Remote pilot operated

Flow direction:

Determined

Mounting position:

Optional

Port size:

DN 20, DN 25, DN 40, DN 50

Operating pressure:

0,4 ... 8 bar (5,8 ... 116 psi)

Pilot connection:

G1/8

Cleaning gas temperature:

-40 ... +85°C (-40 ... +185°F)

Ambient temperature:

-20 ... +85°C (-4 ... +185°F)

Material:

Cover: Aluminium

Seat seal: TPE

Technical data – standard models

Symbol	Orifice (mm)	Valve length (mm)	Flow kv value *1) (m³/h)	Operating pressure (bar) (psi)		Weight (kg)	Model
	20/25	95	22	0,4 ... 8	5,8 ... 116	0,14	8290454.0000.00000
	40	135	59	0,4 ... 8	5,8 ... 116	0,52	8290654.0000.00000
	50	170	80	0,4 ... 8	5,8 ... 116	0,85	8290754.0000.00000

*1) Cv-Wert (US) ≈ kv-Wert x 1,2

Option selector

8290***.0000.00000

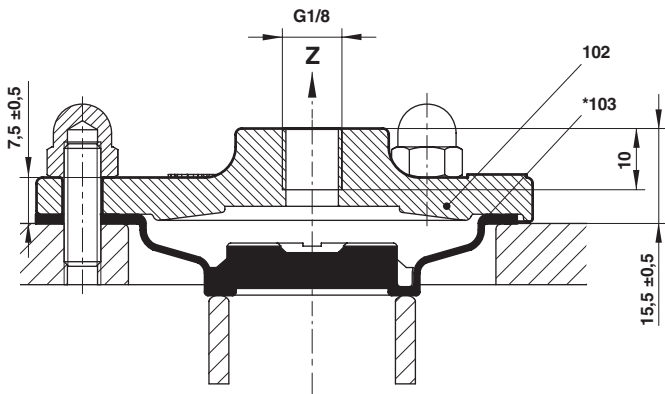
Orifice	Substitute
20/25	4
40	6
50	7

Valve options	Substitute
Tank valve execution without valve housing	54
Dusty gas temperature version -10 ... +140°C (+14 ... +284°F) Seat seal ECO/FPM, Ambient temperature -10 ... +100°C (+14 ... +212°F) (DN 20 + DN 25) Cleaning gas temperature -10 ... +85°C (+14 ... +185°F) (DN 40 ... DN 65)	60
One level, to 4,5 bar (65 psi) (only DN 40)	90

Further versions on request!

Section View

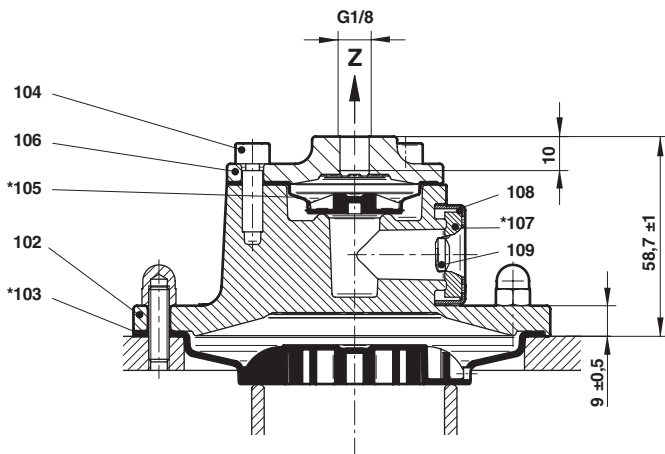
8290454



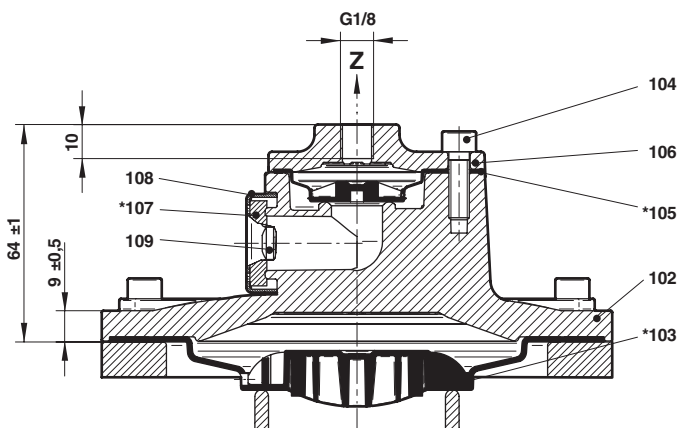
Nr.	Description
102	Valve cover
*103	Diaphragm
104	Socket head cap screw
*105	Diaphragm
106	Valve cover
*107	Silencer
108	Silencer housing
109	Socket head cap screw

* These individual parts form a complete wearing unit.
When ordering spare parts please state Cat. No. and Series No.

8290654



8290754

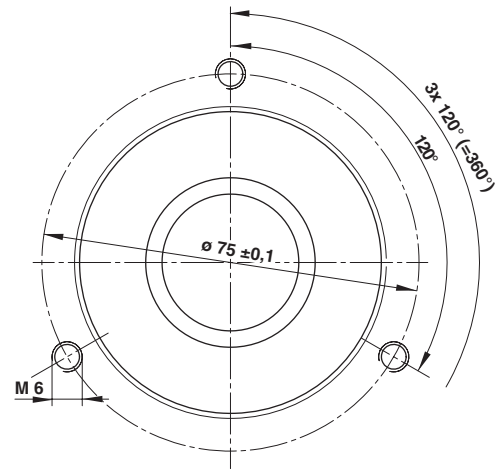
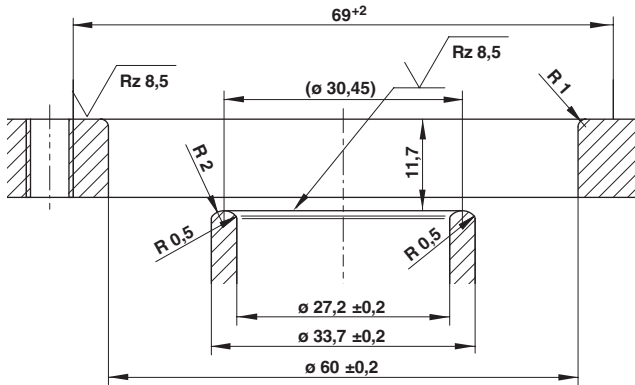


Dimensions

Valve Seat 8290454

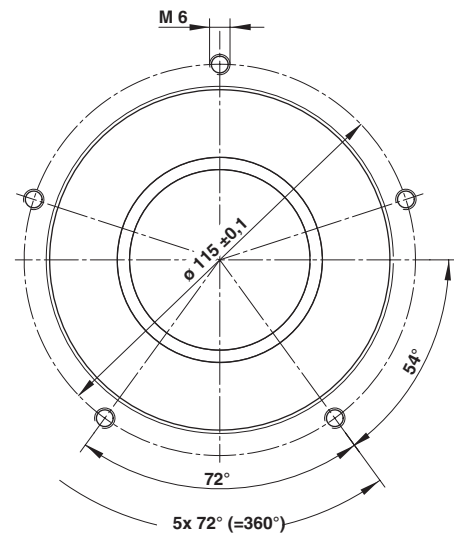
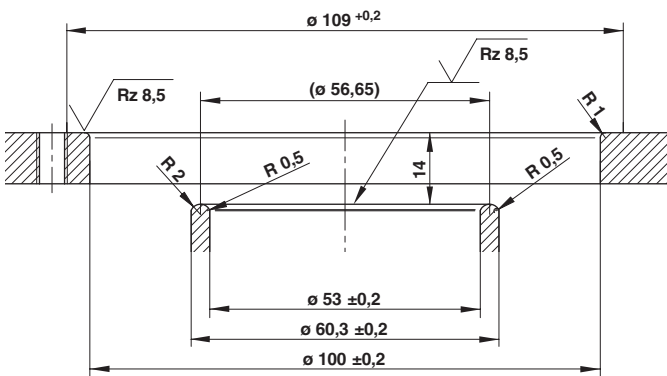
Hole Pattern 8290454

Dimensions in mm
Projection/First angle



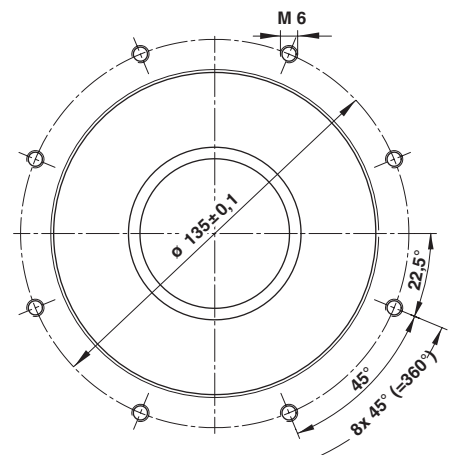
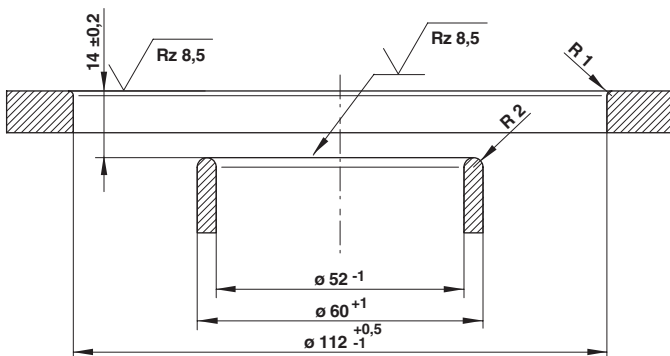
Valve Seat 8290654

Hole Pattern 8290654



Valve Seat 8290754

Hole Pattern 8290754



Note to Pressure Equipment Directive (PED):

The valves of this series are according to clause 4 § 3 of the Pressure Equipment Directive (PED) 2014/68/EU.

This means interpretation and production are in accordance to engineers practice well-known in the member countries.

A certificate of conformity is not designated.